

A GLOBAL INSTITUTE FOR KNOWLEDGE CREATION AND INNOVATION



新加坡国立大学苏州研究院
NUS (Suzhou) Research Institute

目录 CONTENTS

- 02 院长致辞
Director's Message
- 05 成立历程
The Establishment of NUSRI
- 06 研究院简介
NUSRI Profile
- 09 组织架构图
Organisation Chart
- 10 科研
Research
- 16 教育
Education
- 23 产业化
Enterprise
- 28 地图
Map





许国勤 教授
新国大苏州研究院 院长
Professor Xu Guo Qin
NUSRI Director

院长致辞 Director's Message

建设新加坡国立大学苏州研究院，符合中新两国在科技、文化领域进一步合作的宏观意愿。我院以产学研为主导，是一所多学科、综合型的国际研究机构。研究院依托新加坡国立大学（以下简称“新国大”）的科研优势，结合国内高新产业的发展趋势及地方产业发展需求，有针对性地开展科研工作。

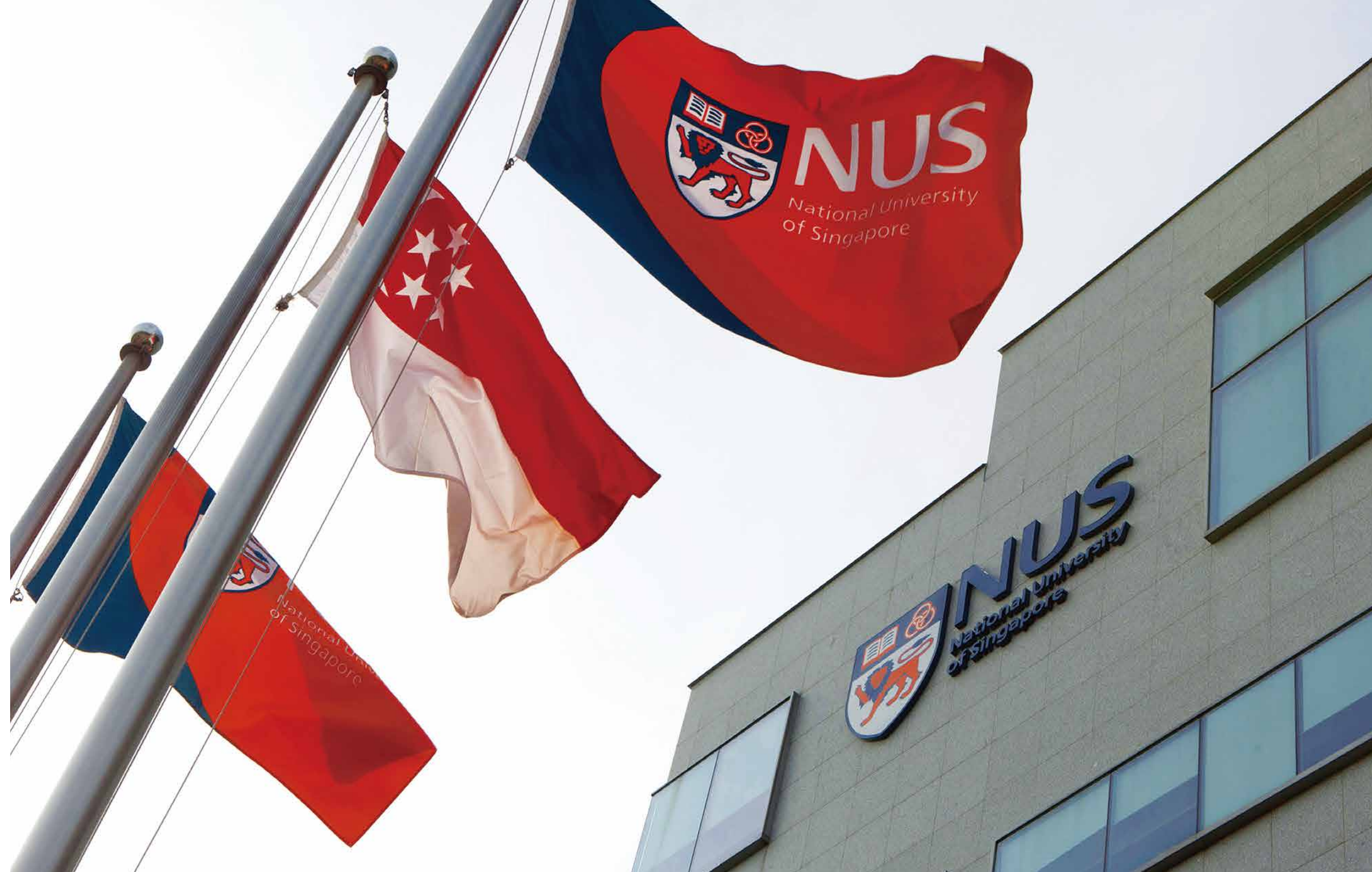
新国大以国际化战略层面为考量，希望以我院作为了解中国、服务中国的基地，通过我院的窗口作用，与中国在科技、教育、文化方面开展深度合作，为进一步提升新国大在中国乃至世界的学术影响，作出积极贡献。

我们所有工作皆“以人为本”，围绕“人”展开：以教育培养人，以科技服务人，以产业化为人创造财富。我由衷希望我院多元、独特、创新的特质能给您留下深刻的印象。欢迎您持续关注我们，期待着与您进一步交流、合作。

The establishment of the National University of Singapore (Suzhou) Research Institute (NUSRI), a comprehensive international research institution, reinforces the spirit of cooperation between China and Singapore in technology and education. At NUSRI, we strive to establish a multidisciplinary platform that leverages the strong research capabilities of National University of Singapore (NUS) to enhance the scientific, economic and industrial thrusts of Jiangsu and China.

As part of its vision to be a leading global university centred in Asia, NUS hopes to engage China closely and directly through NUSRI. This institute is also envisioned to serve as a platform for NUS to influence and contribute academically to China and the rest of the world through in-depth cooperation with various parties from China in the areas of technology, education and culture.

NUSRI takes pride in being a people-oriented institution. We cultivate and unleash the potential of people through education; we are committed to be of service to people through technology and we aspire to create wealth through innovation and enterprise. On behalf of our dedicated team, I would like to extend my deepest gratitude for your continuing support. We look forward to a successful partnership between us as we forge ahead in continuously developing NUSRI to be diverse, unique and innovative.





新加坡国立大学苏州研究院
NUS (Suzhou) Research Institute

开幕仪式暨新大楼启动仪式

Opening &
Singapore



成立历程 The Establishment of NUSRI

2010年11月15日，苏州工业园区管理委员会和新加坡国立大学在时任中国国家副主席习近平与新加坡总理李显龙的见证下，签署合作协议，宣告新加坡国立大学苏州研究院的诞生。

National University of Singapore (Suzhou) Research Institute (NUSRI) was established on 15 November 2010, with an official agreement signing ceremony between National University of Singapore (NUS) and Suzhou Industrial Park Administrative Committee (SIPAC). It was witnessed by Singapore's Prime Minister Mr Lee Hsien Loong and Mr Xi Jinping, the then Vice President of China.

研究院简介

NUSRI Profile



我院是中国首家由国外大学运营和管理的研究院，是中新两国合作在科教领域的进一步深化。新国大拓展国际化影响力的诉求，与苏州工业园区进一步集聚海外科研资源的需要高度契合，双方积极开展密切合作以求互惠共赢。我院的性质为事业单位独立法人，举办单位是苏州工业园区管理委员会。

新国大拥有多元化、开放性的国际视野及卓越的科研资源和创新能力，可针对江苏省、苏州市以及苏州工业园区的发展需求，进行科研力量输出、教育服务、科技成果转化和技术服务，以促进当地产业转型升级与可持续发展。

NUSRI is the very first research institute in China which is independently operated and managed by a foreign university, so as to reinforce the cooperation in science and education between China and Singapore. The development of NUSRI is timely in promoting more international research activities within Suzhou Industrial Park (SIP). NUSRI is registered as a local independent non-profit organisation with legal identity under Suzhou Industrial Park Administrative Committee (SIPAC) and operated and managed by NUS.

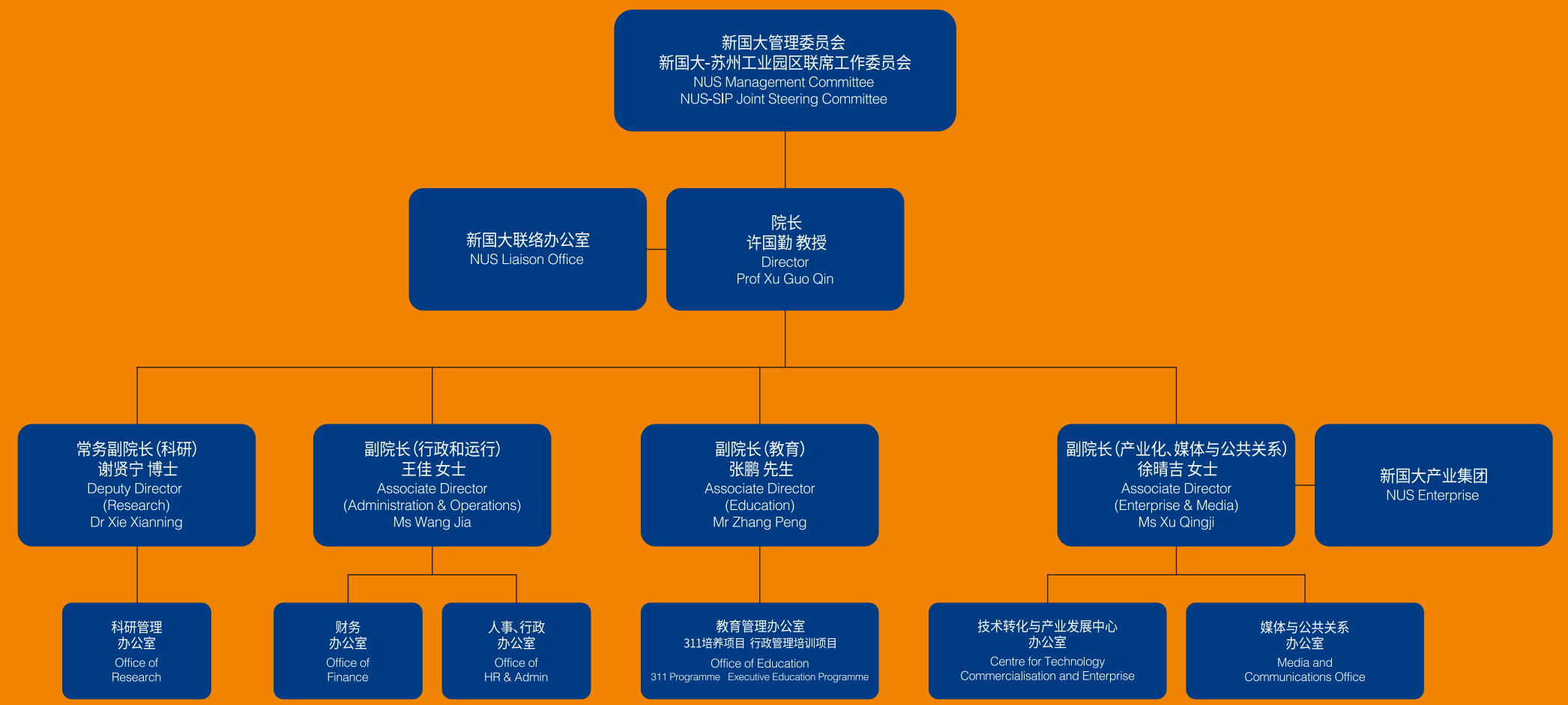
NUSRI is the first overseas research institute of NUS. Drawing on the diverse insight, world-class scientific research resources and innovation ability of the university, NUSRI aims to focus on dedicated research, education and technology commercialisation service to contribute to social transformation and upgrading as well as sustainable development, not only to SIP and Suzhou city but also the Jiangsu province and eventually to the whole of China.





组织架构图

Organisation Chart



科研 Research

我院依托新国大卓越的科研实力，致力于将新国大的优势科学技术带到中国，从而对中国的科技创新、产业发展、人才聚集起到积极推动作用。我院科研工作的核心是开展原创性研究、开发自主核心技术、服务产业发展、带动区域创新升级、产生重大经济与社会效益。

Leveraging on the world-class excellence of NUS, NUSRI aims to extend the research capabilities of the university beyond Singapore, and thus contribute to the rapid development of China. Key areas have been identified and high-impact research works will be performed in accordance with the needs of both Singapore and China. The outcome will benefit Singapore in its technology incubation and commercialisation. They also serve to promote China's knowledge innovation and economic growth.



研究领域

Research Areas

- 先进电子器件
- 生物医学与工程
- 能源与环保科技
- 农业与食品科学工程
- 互动多媒体和软件开发
- 纳米材料及应用
- Advanced Electronic Devices
- Biomedical Science and Engineering
- Energy and Environment Technology
- Agricultural and Food Science and Technology
- Interactive Multimedia and Software Development
- Nanomaterials and Applications

研究中心与实验室

Research Centres and Laboratory

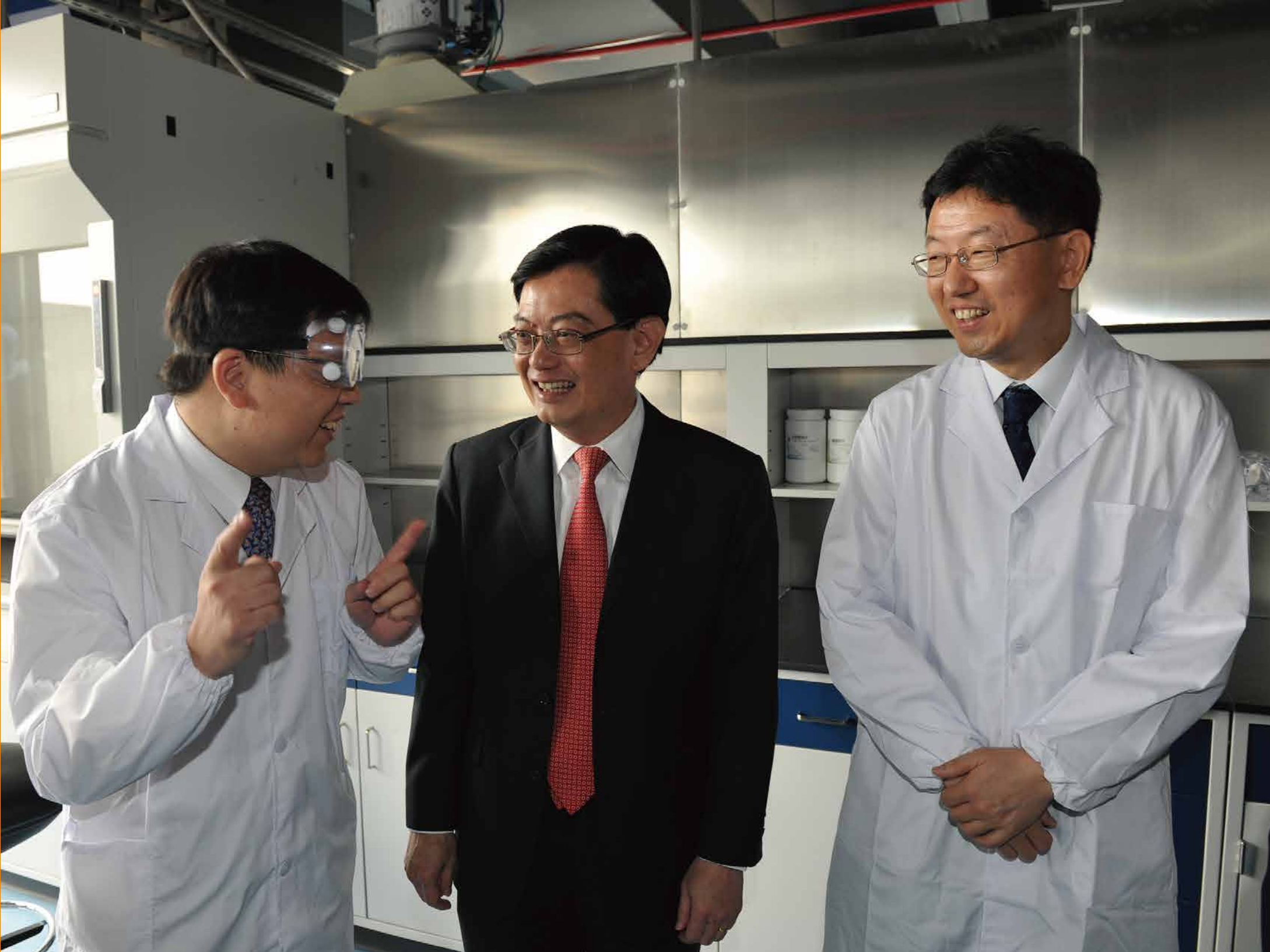
- 环境与能源纳米科技卓越研究中心
- 智慧医疗技术卓越研究中心
- 大健康生物与食品工程卓越研究中心
- 生物医学工程创新中心
- 人工智能实验室
- Centre for Peak of Excellence on Environmental and Energy Nanotechnology
- Centre for Peak of Excellence on Smart Medical Technology
- Centre for Peak of Excellence on Biological Science and Food Engineering
- Innovation Centre for Biomedical Engineering
- Artificial Intelligence Laboratory

科研基金

Research Grants

国家级	国家自然科学基金
	科技部重点研发计划
	教育部2011协同创新计划
省级	江苏省重点研发计划
	江苏省重大科技开放合作平台
	江苏省自然科学基金(青年)
	江苏省自然科学基金(面上)
市级	苏州市国际研发机构
	苏州市科技计划项目

National	National Natural Science Foundation of China (NSFC)
	National Key Research and Development Programme from Ministry of Science and Technology (MOST)
	2011 Collaborative Innovation Programme from Ministry of Education (MOE)
Provincial	Key Research and Development Programme of Jiangsu Province
	Major Science and Technology Cooperation Platform of Jiangsu Province
	Youth Grants in Fundamental Sciences, Natural Science Foundation, Jiangsu Province
	General Grants in Fundamental Sciences, Natural Science Foundation, Jiangsu Province
Municipal	Suzhou International Research and Development Institute
	Suzhou Science and Technology Programme





科研合作 Research Collaborations

- 江苏省博士后创新实践基地
- 与苏州大学机器人与微系统研究中心共建智能制造与系统联合实验室
- 与中粮集团有限公司共建功能食品安全评价系统
- 与益海嘉里集团有限公司共同研发食用油中黄曲霉素检测技术及设备
- 与江苏迈纳德微纳技术有限公司联合研发微型多功能超高真空设备
- 与诺尔产学研科技(桐乡乌镇)有限公司共同开展人体内植入式医疗装置研发
- 与浙江中卫医学研究股份有限公司联合进行生物材料开发及其在医学上的应用

- Postdoctoral Innovation Practice Base in Jiangsu Province
- Joint Laboratory with Robotics and Micro-systems Centre of Soochow University for Intelligent Manufacturing and System
- Collaboration with COFCO Corporation on the development of food safety technology
- Collaboration with Wilmar International Ltd. on the development of nanotechnology for toxins detection in edible oils
- Collaboration with MNT MEET YOUR ALD VISION Co., Ltd. on the micro multi-function ultra-high vacuum equipment
- Collaboration with Noel IUR Technology (Tongxiang Wuzhen) Co., Ltd. on implantable medical devices
- Collaboration with Zhejiang Zhongwei Medical Research Co., Ltd. on the development of biomaterials and their medical applications



教育 Education



我院教育工作依托新国大卓越的教学资源和科研成果，从国际化视野出发，积极举办各项教育项目，为中国、新加坡以及世界各地专家学者搭建分享经验和知识的平台，进一步推广新国大的教育理念，分享教育成就。目前，重点开展的项目有：“3+1+1”联合培养项目、国际学生来华交流项目以及行政管理培训项目等。

Drawing on the teaching and research excellence of NUS and her affiliated organisations, NUSRI is also a platform for professionals and academics from Singapore, China and around the world to share their knowledge and experience. Education division organises the following key programmes: "3+1+1" Joint Educational Programme, China Immersion Programme for Overseas Students and Executive Education Programme.



举办项目 Programmes

- **311培养项目**

311培养项目针对国内优秀本科生,制定三年国内大学本科课程、一年研究院衔接课程,成绩达标者可直升新国大硕士,一年完成研究生学习。

- **311 Programme**

In 311 Programme, students spend three years of undergraduate study at home universities, one year of bridging course at NUSRI and a final year of completing master's degree at NUS in Singapore.





- **国际学生来华交流项目**

作为跨文化交流互动平台，我院定期组织国际学生来华交流项目。此项目将学术课程与企业参观、文化体验等活动相结合，让各国学子亲身体验和深入了解中国经济发展、商业模式和东方独特的文化底蕴。

- **China Immersion Programme for Overseas Students**

As a platform for cross cultural interaction and communication, NUSRI offers China immersion programme to international students. Students participate in academic courses and seminars, and visit to Chinese companies to have the first-hand insight of the Chinese economic development, business operations and, in general, culture of the East.



- **行政管理培训项目**

依托新国大卓越的师资团队和新加坡特有的管理经验，为各级政府、企事业单位管理人员定制国际化、高层次的短期培训课程。

- **Executive Education Programme**

Leveraging on the teaching excellence of NUS and Singapore's unique management experience, NUSRI provides short-term customised executive courses for government agencies and private enterprises.

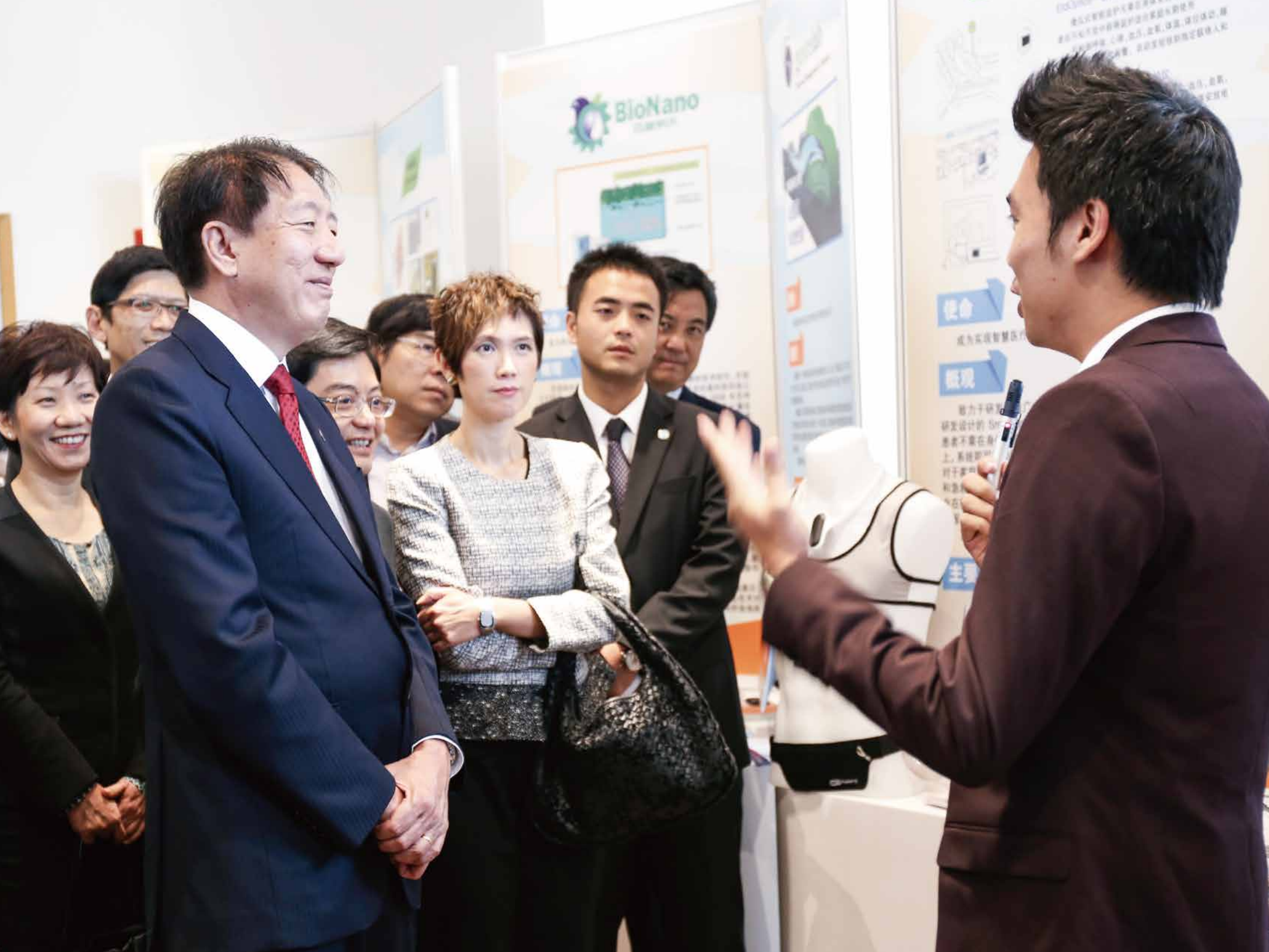


产业化 Enterprise

我院产业化工作依托新国大的科研资源、创新能力和产业化经验进行科研成果转化和技术服务。已成功建立企业孵化中心、技术转移中心、企业合作联盟等多个服务中心。通过引进国际高科技创业公司落户江苏，建设国际技术转移转化和高科技孵化平台，培养具有全球视野的创新创业领军人才等工作，促进江苏省产业转型升级和双向创新创业交流。

Leveraging on National University of Singapore's international leadership in research, education and entrepreneurship, NUSRI Enterprise works in collaboration with China technology companies and China government to access and adopt Singapore and international technologies. The aim is to be the launchpad for Singapore and international technology companies venturing into the China market.





新加坡-中国（苏州） 创新中心 Singapore-China (Suzhou) Innovation Centre

2014 年，中国科技部与新加坡贸工部签署协议建设“新加坡-中国(苏州)创新中心”，致力引进新加坡科技服务的成熟经验，将国际化的科技转化体系软件转移到中国，在苏州工业园区建设适合国际科技成果产业化的环境，推动中新两国技术转化和创新企业交流对接。

In 2014, China's Ministry of Science and Technology and Singapore's Ministry of Trade and Industry penned an agreement to establish the Singapore-China (Suzhou) Innovation Centre (SCIC) in NUSRI. SCIC aims to create a platform for international technology collaboration and commercialisation. The platform will provide access to technologies from NUS, Singapore and from around the world through the NUS network thus providing market access and potential technology licensing opportunities to good quality technologies developed outside China for the China market.





新国大苏研院技术转化与产业发展中心

致力于推动中新两国科技与产业的双向交流，加速与地方产业需求强关联的高科技初创企业落地，搭建全球顶尖科技与产业对接交流的桥梁，促进技术创新及地方经济发展。

- 苏州伯乐格71

打造富有活力的国际化创业生态体系，聚拢全球资源和网络，建立覆盖全创业生命周期的孵化生态，协助初创企业对接政府、大型企业及投融资机构等多方资源，提供商业模式、技术及市场咨询等专业服务，帮助新加坡及海外科技企业成功落地，同时也协助中国企业开拓国际市场。

- 新国大苏研院国际技术转移转化中心

依托新国大及研究院的科研实力与科技资源，创新融合国际技术转移转化模式，建立了符合地方产业升级需求的专业化服务平台，助力企业科技创新和转型升级，推进国际一流高校技术同中国企业的产学研合作。

Centre for Technology Commercialisation and Enterprise

The Centre is committed to fostering exchanges and collaboration of technology and industry between China and Singapore; accelerating the landing of high-tech start-ups; and connecting the world's cutting-edge technologies with industries, thus promoting technology advancement and local economic development.

- BLOCK71 Suzhou

BLOCK71 Suzhou aims to cultivate a vibrant and international entrepreneurial ecosystem that is a nexus of global resources and networks. It establishes an incubation ecosystem covering the entire life cycle of the entrepreneurship, and assists start-ups to connect with government, large enterprises, investment and financing institutions and other resources. BLOCK71 Suzhou provides professional services such as business model, technology and market consulting, thereby helping Singapore and overseas technology companies to succeed in landing, as well as helping Chinese companies explore the international market.

- International Technology Commercialisation Centre

Leveraging on the research strength and resources of NUS and NUSRI, the Centre innovatively integrates the best practices in technology commercialisation and has established a professional service platform that meets the needs of local industrial upgrading. It facilitates the technological innovation, transformation and upgrading of enterprises and promotes the industry-academia-research cooperation between world-class universities and Chinese enterprises.



地图 Map



通信地址

新加坡国立大学苏州研究院
苏州市工业园区独墅湖科教创新区林泉街377号公共学院3号楼二楼
邮编: 215123

Mailing Address

No. 377 Linquan Street, Level 2, Block 3, Public Academy, Dushu Lake Science and Education Innovation District, Suzhou Industrial Park, Suzhou, Jiangsu, China 215123

电话 (Tel): +86 512 62997800 传真 (Fax): +86 512 62997809

www.nusri.cn

